

Simplified Application Patch Management for Microsoft System Center

Seventy-five percent of cyber attacks target vulnerabilities in commercial software that could have been avoided with a patch¹. Patching operating systems is a common practice, but with the growing number of vulnerabilities coming from applications not part of the OS, patch management is not a “solved” problem. Shavlik® Patch for Microsoft System Center maximizes your organization’s investment in Microsoft System Center Configuration Manager (SCCM) to reduce security risks from unpatched non-Microsoft third-party applications.

GO BEYOND OS PATCHING TO REDUCE APPLICATION SECURITY RISKS

Avoid being the next security disaster headline by reducing vulnerabilities and risks in your infrastructure. Shavlik Patch closes the application patching gap by extending SCCM’s patching capabilities to include third-party application patching.

Applications now represent a greater risk to the network than the OS. Shavlik Patch reduces the risk created by applications by patching hundreds of popular applications, including Adobe, Apple, Java, Google, Firefox, and many more.

Don’t rely on end users to patch individual applications. While most organizations have an existing OS patching process, many don’t have an accurate or consistent patching strategy for applications. With Shavlik Patch, IT gains control of software updates by deploying application patches centrally through SCCM.

¹ http://csis.org/files/publication/130212_Lewis_RaisingBarCybersecurity.pdf

MAXIMIZE YOUR MICROSOFT SYSTEM CENTER INVESTMENT

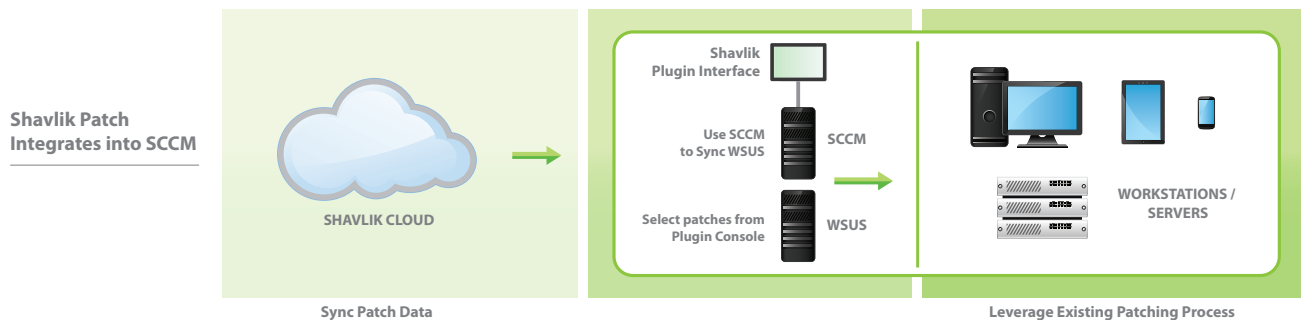
Shavlik Patch expands SCCM to include application patching to keep systems up-to-date and doesn’t require additional platforms or processes. The integrated, intuitive plugin for the SCCM console lets IT admins define and deploy applications updates from within SCCM and leverage existing workflows.

Shavlik Patch decreases significantly the amount of time taken between patch availability and deployment. The solution eliminates many of the manual steps normally taken to define third-party application patches for workstations and servers, making IT immediately productive.

ACCELERATE APPLICATION PATCHING FROM MONTHS TO MINUTES

As more applications are added to an environment, the IT administrator’s time patching applications increases exponentially. Shavlik Patch utilizes the same workflows used to patch the OS in SCCM to push out third-party application updates.

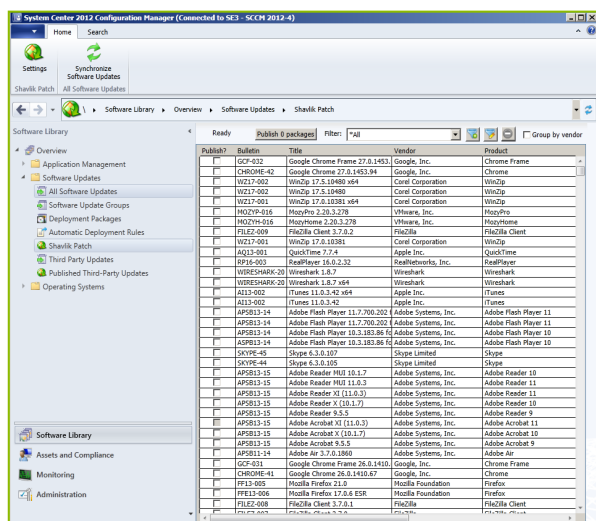
With the solution’s easy-to-use plugin interface for SCCM, IT administrators reduce the number of steps to create application updates. The days of loading patch information manually into SCCM through a difficult and error-prone tool set are over. Data is loaded from the Shavlik Cloud and users can see patch information instantly from within SCCM.



Shavlik Patch™

FOR MICROSOFT SYSTEM CENTER

IT can patch with confidence knowing that patching information from Shavlik has been pre-tested and leverages Shavlik's years of expertise in the patching process. In addition, the solution's simplified approach to patching third-party applications within SCCM requires no expensive consultants or additional services.



FEATURES

- ▶ Ability to patch hundreds of the most popular applications
- ▶ Integrated plugin for the SCCM 2012 console
 - View of available patches
 - Select patches to publish and expire
 - Smart filtering of patches based on multiple criteria (vendor, product, etc.)
- ▶ Check for and download new patch data automatically
- ▶ Publish new patches automatically based on smart filter
- ▶ Auto-detect Windows Software Update Server
- ▶ Digital Certificate management
- ▶ Handles difficult to install patches including Java
- ▶ Streamline handling of bundled patches such as Apple

For a current list of covered application updates, please visit:
<http://www.shavlik.com/apps>

Simplified Third-party Patching for Microsoft System Center

MINIMUM REQUIREMENTS



- ▶ Microsoft System Center Configuration Manager 2012 Console (Gold, SP1, and R2)
- ▶ Operating System
 - Windows 2008 R2 SP1 or later
 - Windows Server 2012 or later
 - Windows 7 SP1 or later (RT not supported)
 - Windows Software Update Services (WSUS)
- ▶ On Windows 2008 R2 SP1 and Windows 7 SP1 or later - WSUS 3.0 SP2 or WSUS 3.0 SP2 Administration Console
- ▶ On Windows Server 2012 and Windows 8 or later - Enable the role "Windows Software Update Services" or enable the feature "Role Administration Tools>Windows Software Update Services>API and PowerShell cmdlets"
- ▶ .Net 4.5

CONTACT INFORMATION

To contact a product representative, please email:
sales@shavlik.com

Copyright © 1993-2014 Shavlik. All rights reserved. This product is protected by copyright and intellectual property laws in the United States and other countries as well as by international treaties. SHV-1265 01/14 BB/RP

